

# TyeDee Bin Cub/Original/XL

## Assembly Instructions

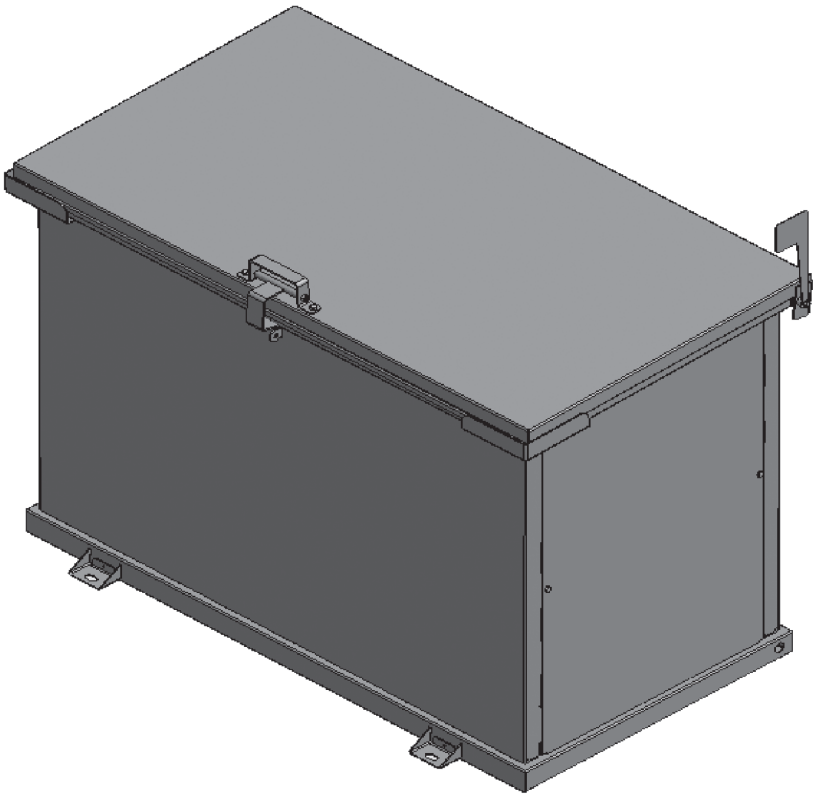
### Parts List

ITEM #	QTY	DESCRIPTION
1	1	BASE ASSEMBLY
2	1	FRONT PANEL
3	1	RIGHT SIDE PANEL
4	1	LEFT SIDE PANEL
5	1	REAR PANEL
6	1	RIGHT SIDE FRAME ASSEMBLY
7	1	LEFT SIDE FRAME ASSEMBLY
8	1	HANDLE ASSEMBLY
9	1	LID ASSEMBLY
10	1	FLAG
11	1	RIGHT HINGE PIN (FLAG)
12	1	LOCK TAB
13	4	MOUNT FOOT
14	22	TEK SCREW: #12 x 3/4"
15	1	HINGE PIN SCREW
16	7	CARRIAGE BOLT: 1/4-20 x 5/8"
17	7 each	1/4-20 NYLOCK NUTS & 1/4-FLAT WASHERS
18	1	BOLT: 1/4-20 x 1/2"
19	1	1/4-LOCK WASHER



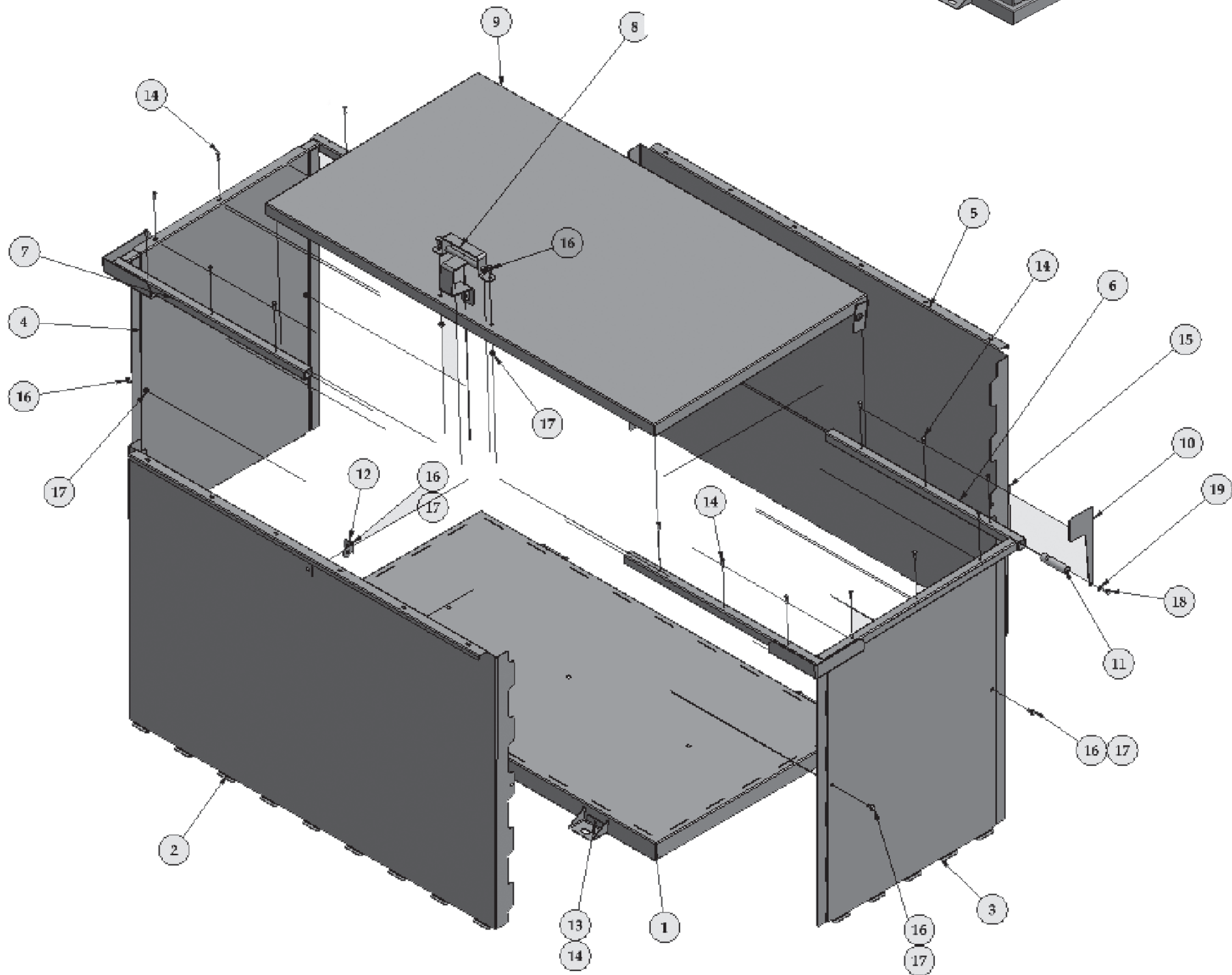
Steel Animal Resistant  
Garbage & Storage Containers

# TyeDee Bin



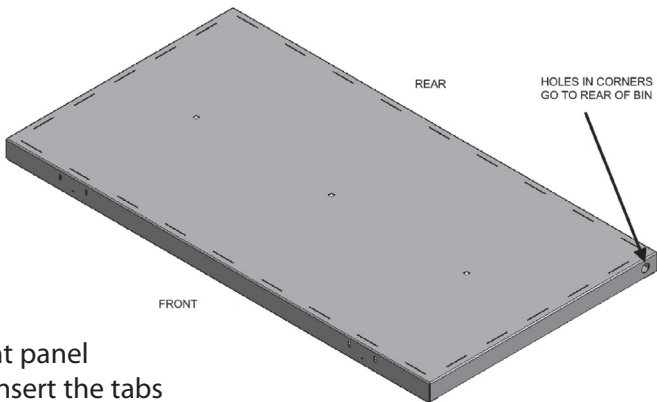
### TOOLS REQUIRED

- ✓ 7/16" Socket & Wrench
- ✓ 5/16" Socket
- ✓ 1/2" Socket
- ✓ Hammer or Rubber Mallet
- ✓ Drill with Socket Adapter
- ✓ Vise Grips or Spring Clamps (to secure frames)

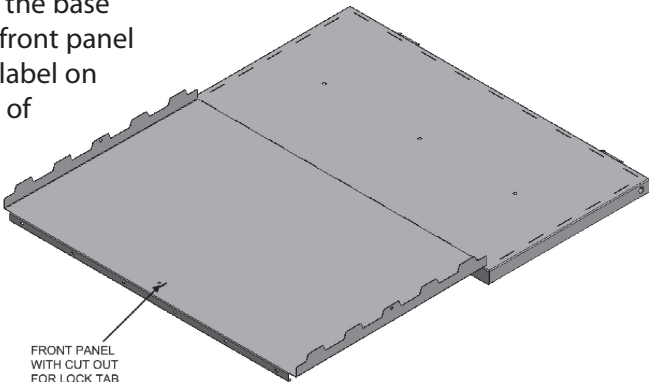


ASSEMBLY STEPS

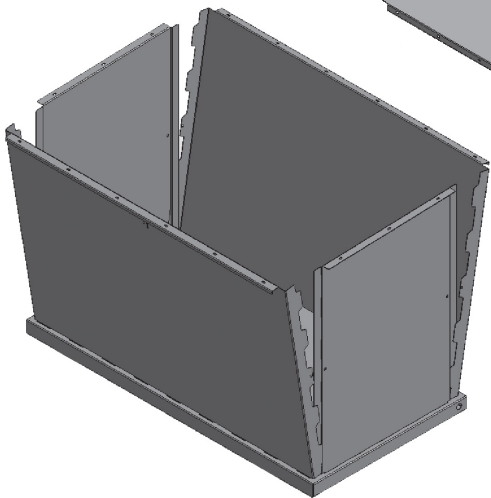
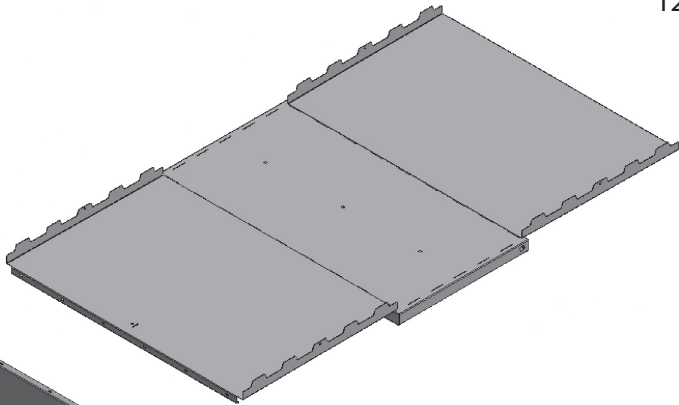
- 1. Remove all parts from the packaging.
- 2. Lay the base panel flat on the ground. Note the holes in the two corners of the base panel go to the rear of the bin.



- 3. Lay the front panel down and insert the tabs through the slots in the base assembly. Note the front panel has the TyeDee Bin label on the top right corner of the panel.

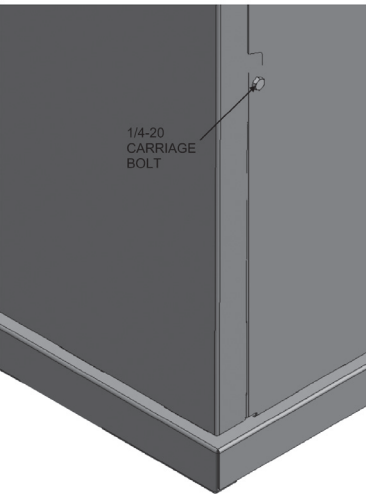
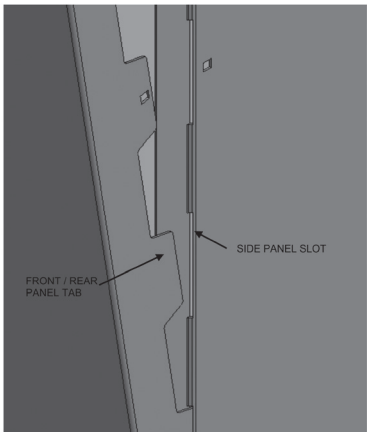


- 4. Lay the rear panel down and insert the tabs through the slots in the base.

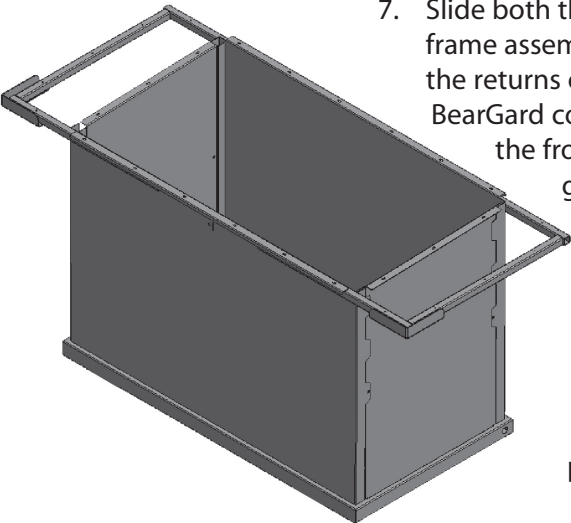


- 5. Insert the fingers on the bottom of the side panels through the slots in the base panel. Lift up the front and rear panels 90 degrees. Make sure tabs are fully inserted properly into the slots in the base pan before and during the raising of the panels.

The tabs in both the front and rear panels will fit through the slots in the side panels.

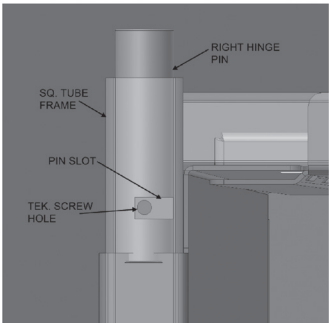
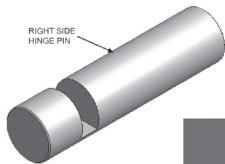


- 6. Fasten both the side panels to the front and rear panels using the carriage bolts, nylock nuts, and flat washers. Important, do not tighten until the frames are installed.



- 7. Slide both the left and the right square frame assemblies up into place underneath the returns of the panels. Note that the BearGard corners are to be positioned at the front of the bin, the hinge pins go to the rear. Ensure that the frames are snug against the side panels. Use vise grip pliers or a clamp to hold the frames in place. Secure the frames by fastening the #12 Tek Screws through the slots on the panels into the pre-punched holes in the frames.

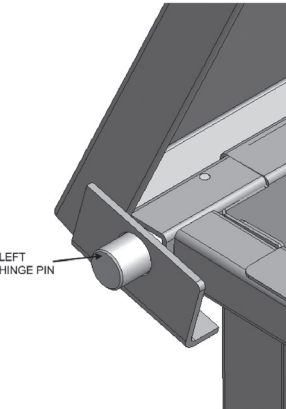
- 8. Insert the lock tab through the cut out in the front panel and fasten using a carriage bolt, flat washer, and nylock nut. *Note the XL model now has two lock catches, install both of these the same way.*



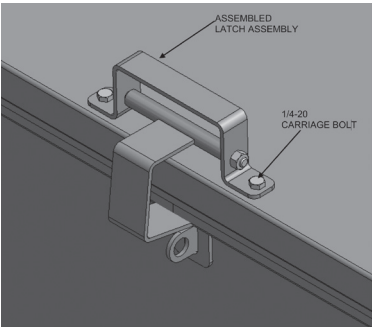
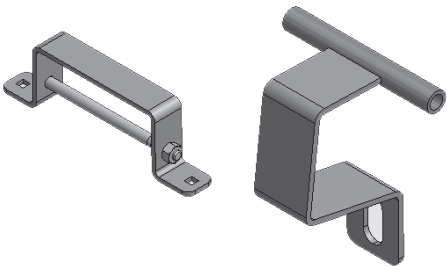
- 9. Remove the right side hinge pin by removing the tek screw, which is already inserted into the sq. tube frame.

- 10. Install the lid from the back of the bin, placing the left side lid hinge hole over the welded pin. Then close the lid.

- 11. Insert the right hand pin in the right lid hinge hole so that only the black portion of the pin is seen. Open the lid, line up the machined slot on the hinge pin to the hole for the tek screw, and insert tek screw.

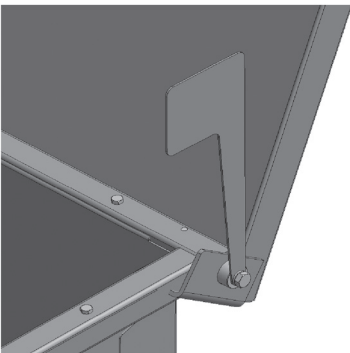
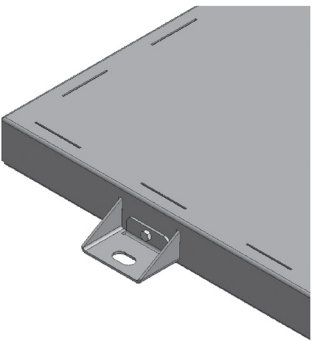


- 12. Remove the bolt from the handle and assemble through the lock tab portion of the latch.



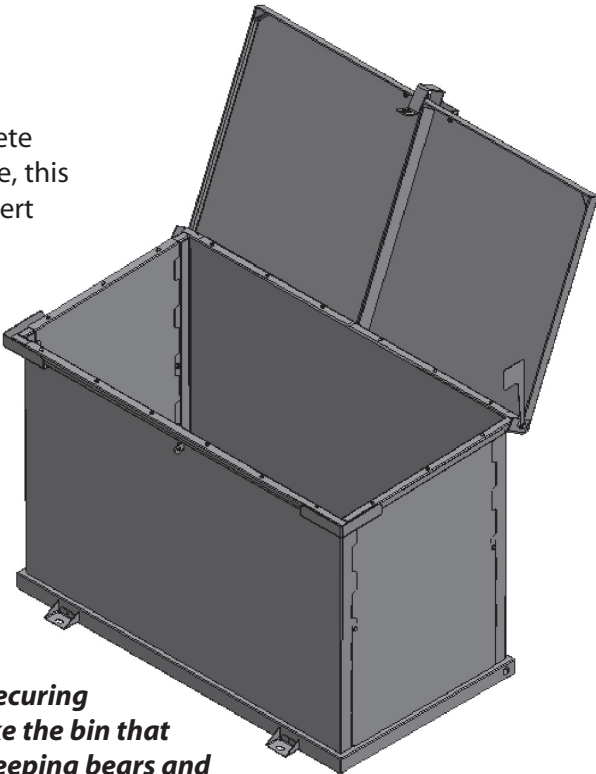
- 13. Fasten the handle and latch assembly to the lid using two carriage bolts, flat washers, and nylock nuts. *Note the XL model now has two handle/latch assemblies, install both the same way.*

- 14. Fasten the flag to the right side hinge pin using the 1/4-20 x 1/2" bolt and lock washer. You will likely have to adjust the flag to give the right movement before tightening the bolt. It is ideal to have the flag just past vertical with the hinge pin twisted clockwise against the TEK screw stop. When positioned correctly the flag will sit horizontal in the down position and past vertical to indicate a need for waste collection.



- 15. Add mount feet if the bin is to be lagged to a concrete pad or another stable base, this is recommended. Just insert the mount feet tabs into the four sets of slots at the front and rear of the TyeDee Bin Base. #12 Tek screws are provided as a convenience, but their use is optional.

**\* You can also use the holes in the rear of the base to secure the bin to a tree or post with a 3/16" chain or cable. Securing your TyeDee Bin will make the bin that much more effective in keeping bears and other wildlife out of your trash, and it also helps prevent theft of your bin.**



**Congratulations Your TyeDee Bin is now complete!**